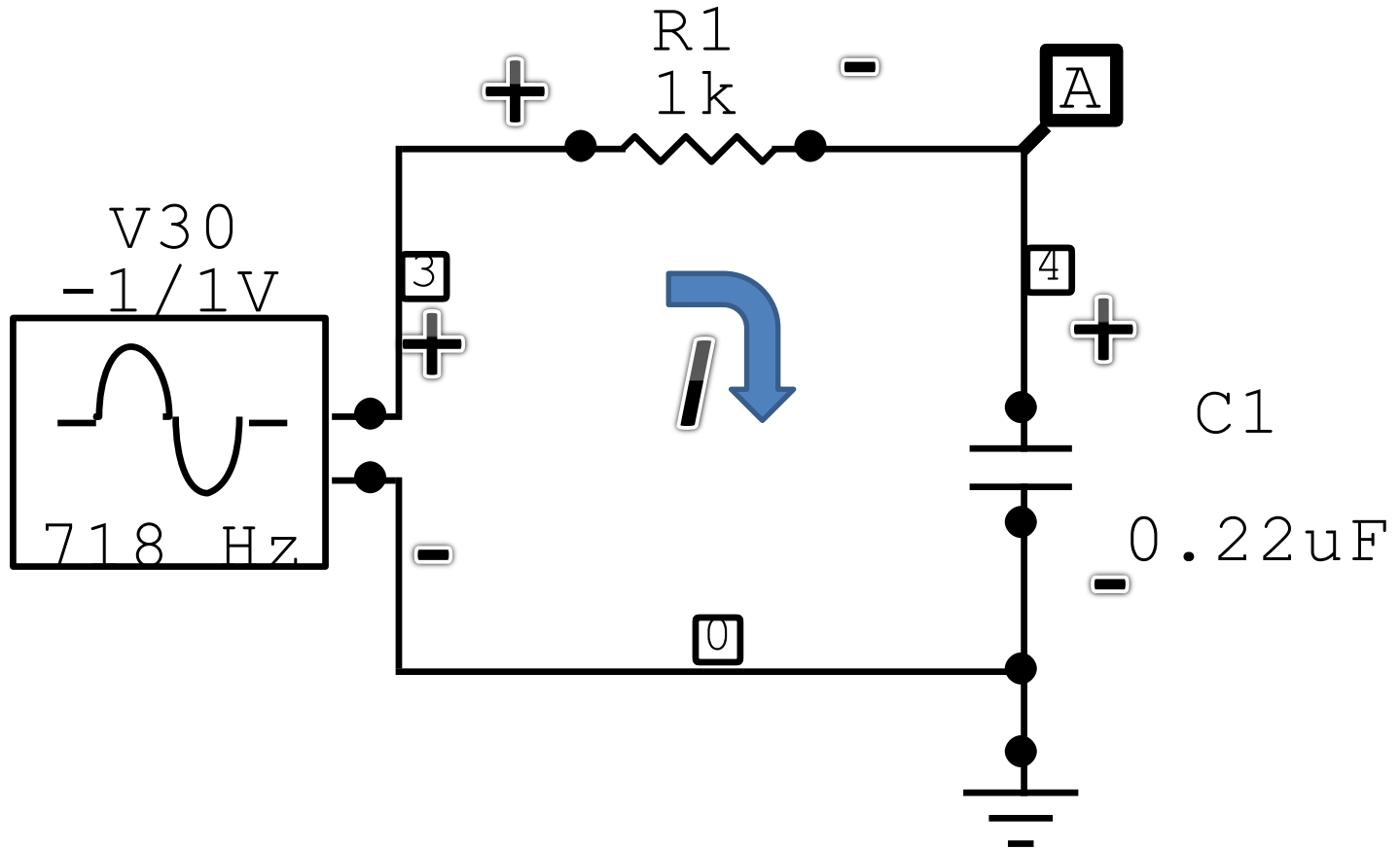


# Aula 1

David F540

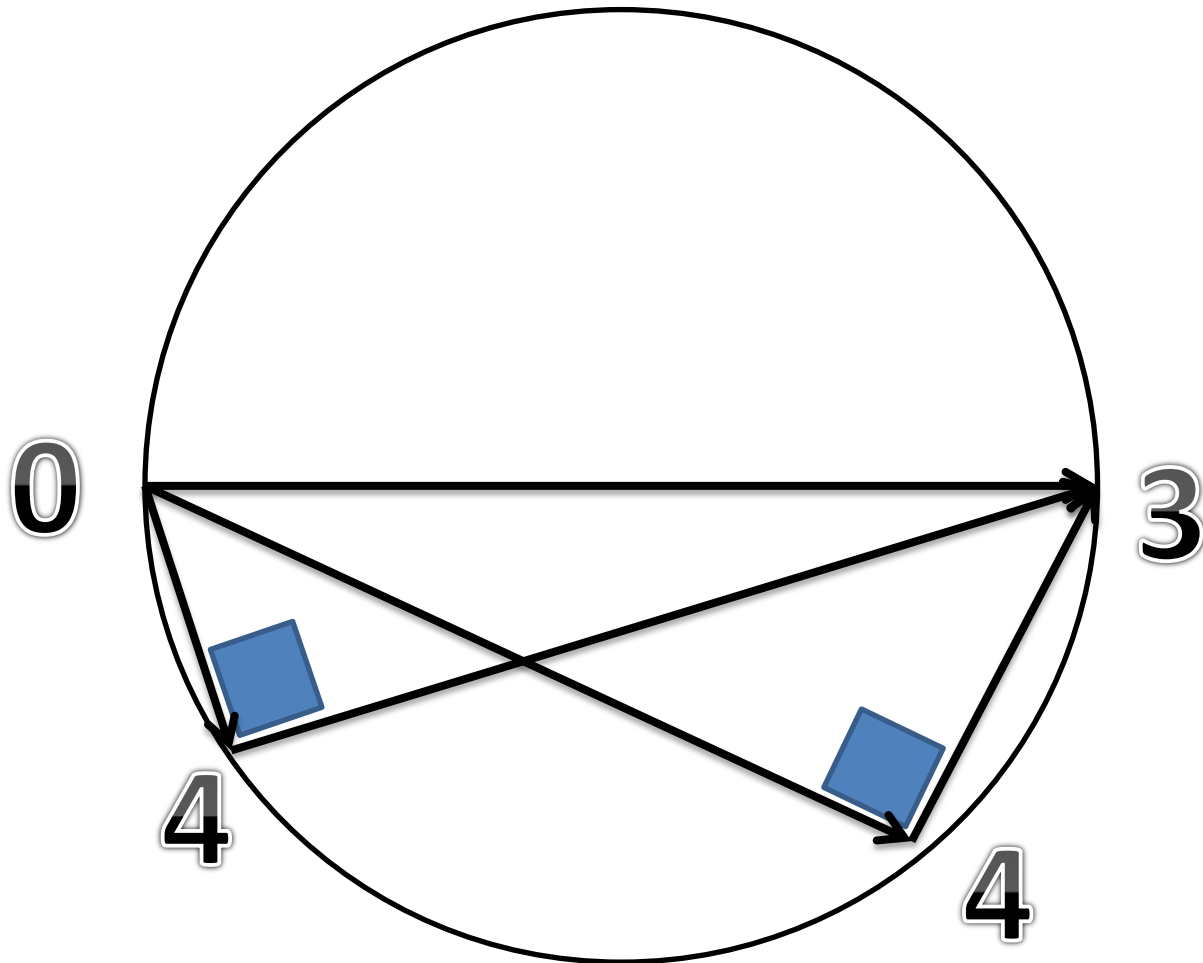
1s 2020

$$RC=0.22\text{ms}$$



# Fasores, diagrama.

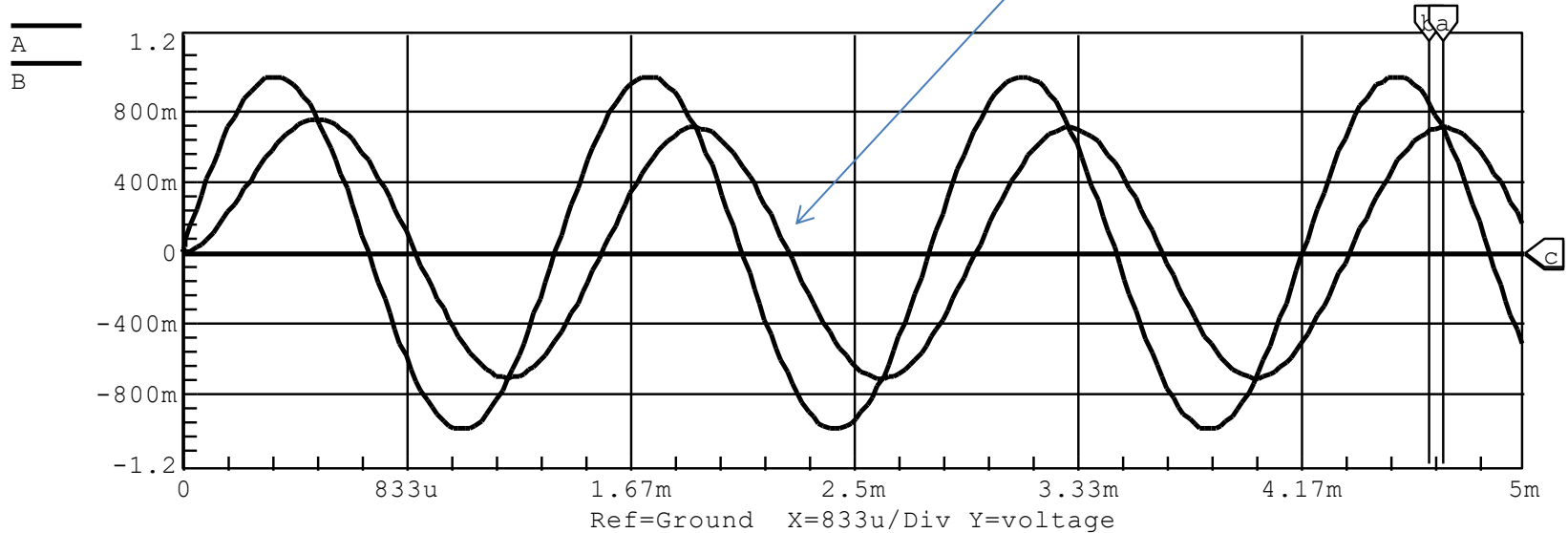
$$V_{30} = V_{40} + V_{34}$$



# Ondas de tensão na fonte e no condensador (V40)

Xa: 4.693m Xb: 4.640m a-b: 52.63u freq: 19.00k  
Yc: 222e-18 Yd: -13.33m c-d: 13.33m

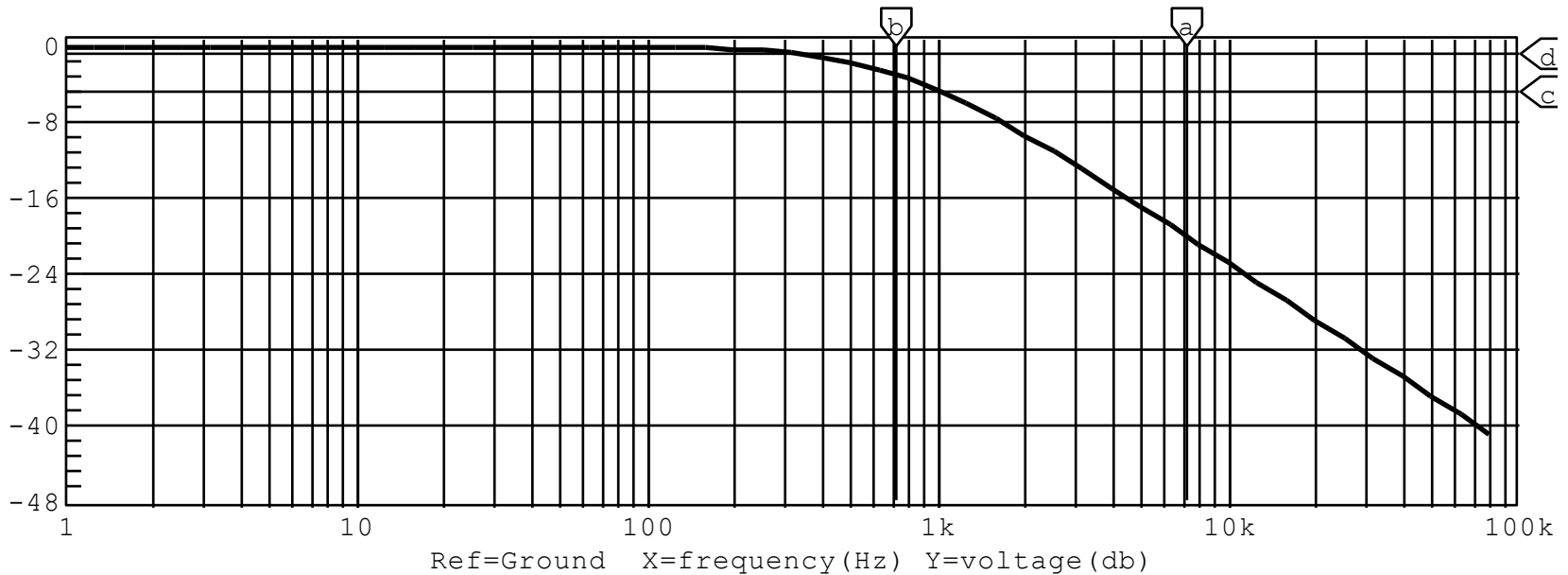
V40



# Diagrama de Bode, módulo dB.

Xa: 7.115k    Xb: 711.5    a-b: 6.403k  
Yc: -4.800    Yd: -533.3m    c-d: -4.267

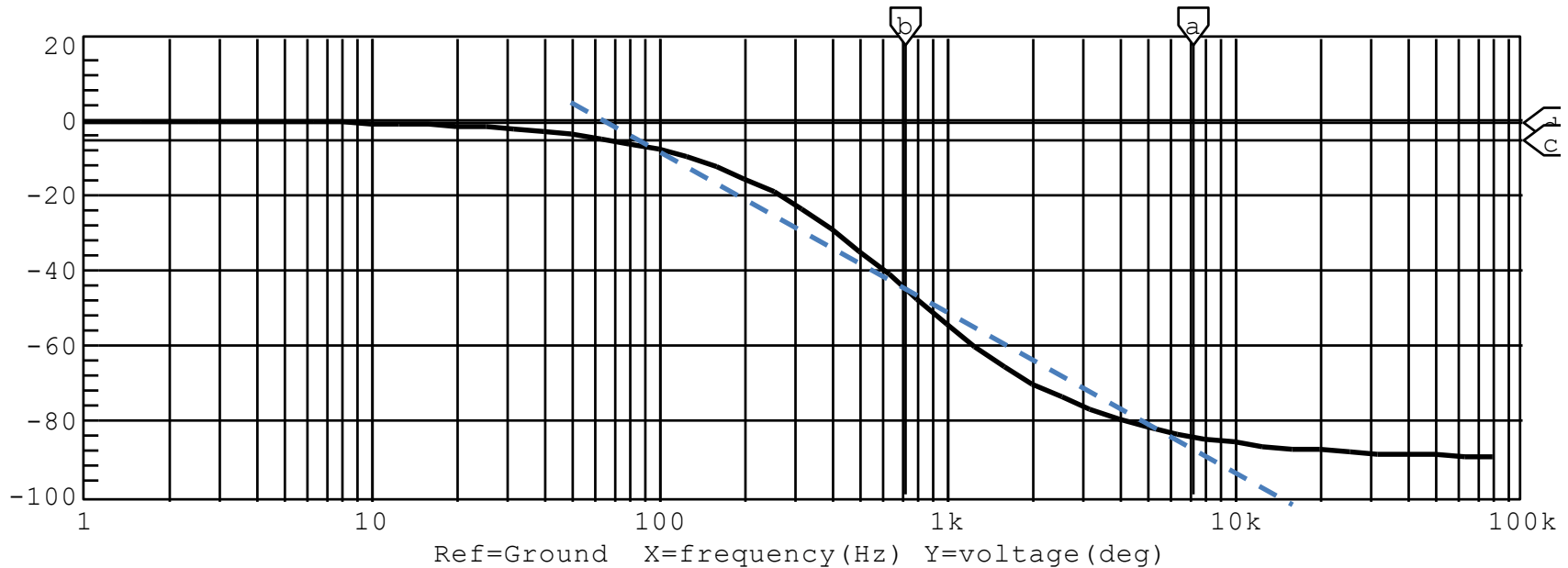
A



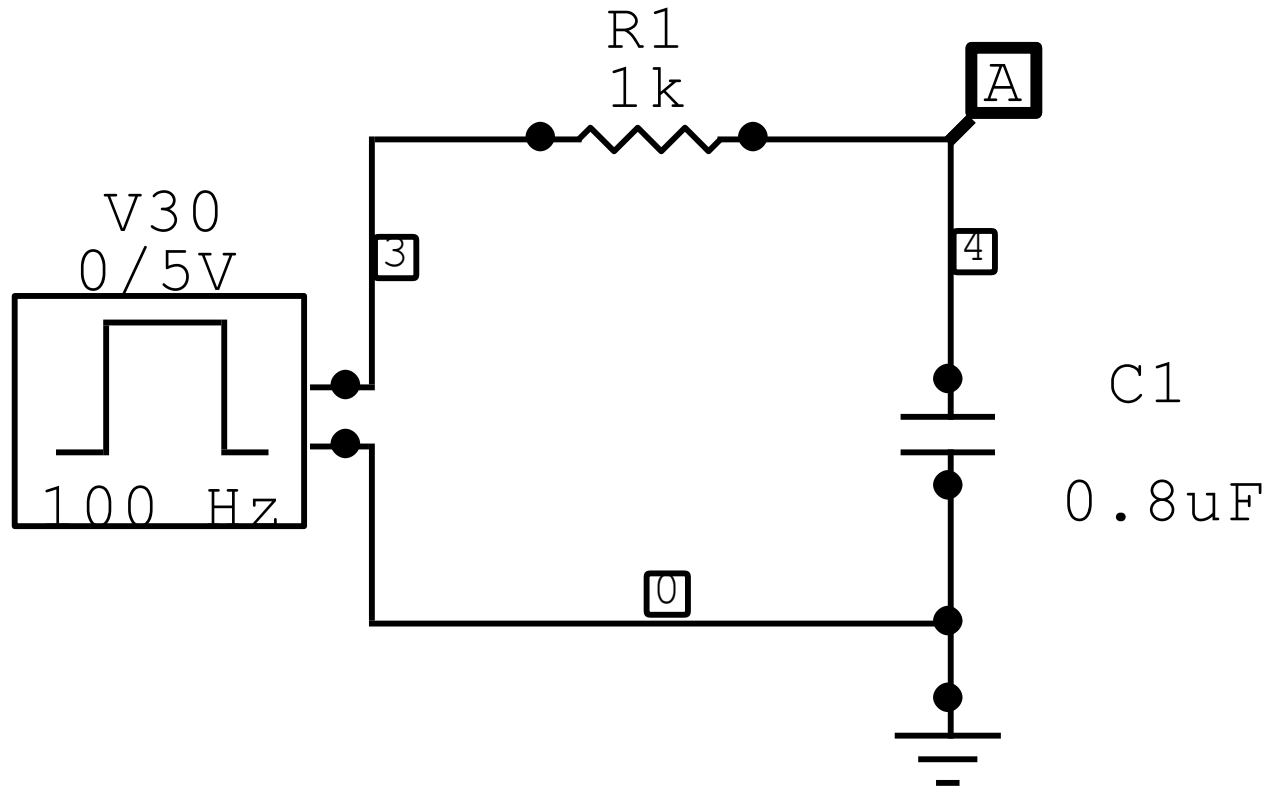
# Fase em graus, Bode diagrama

Xa: 7.115k    Xb: 711.5    a-b: 6.403k  
Yc:-4.800    Yd:-533.3m    c-d:-4.267

A

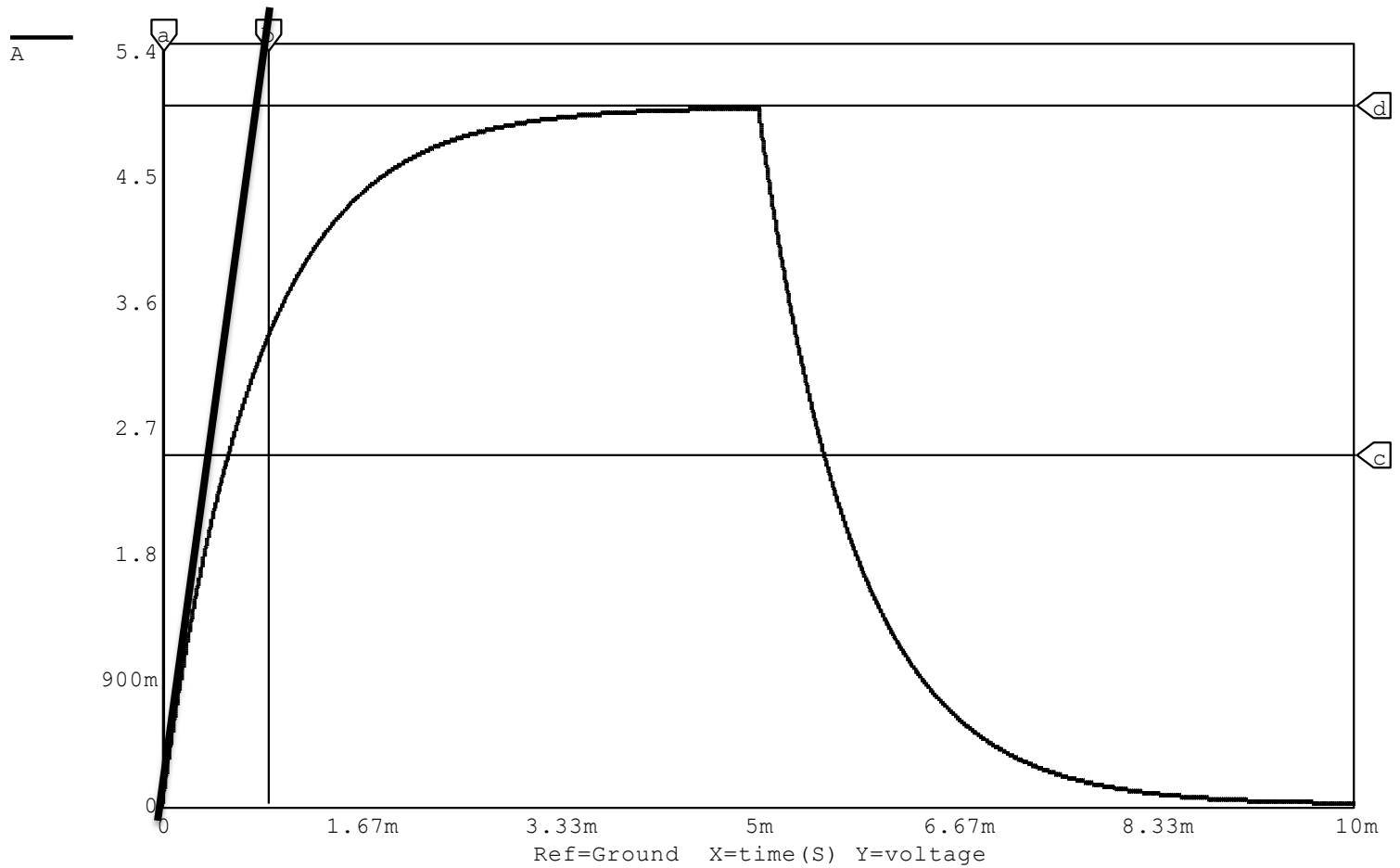


$RC=0.8\text{ms}$



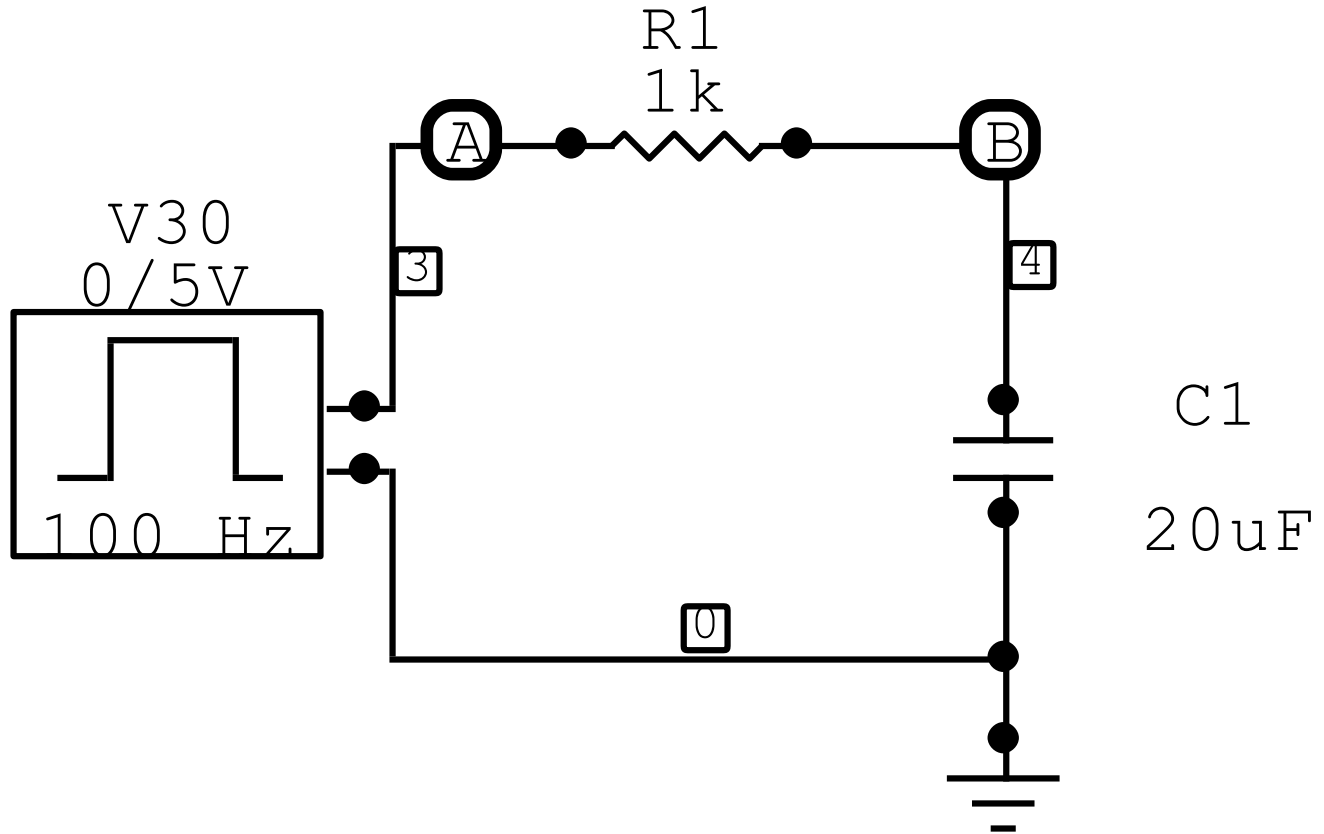
# RC Charge/Discharge

Xa: 0.000 Xb: 877.2u a-b:-877.2u freq: 1.140k  
Yc: 2.505 Yd: 5.010 c-d:-2.505





$RC=20\text{ms}$



# RC charging. Valor médio.

Xa: 0.000 Xb: 7.193m a-b:-7.193m freq: 139.0  
Yc: 2.505 Yd: 5.010 c-d:-2.505

