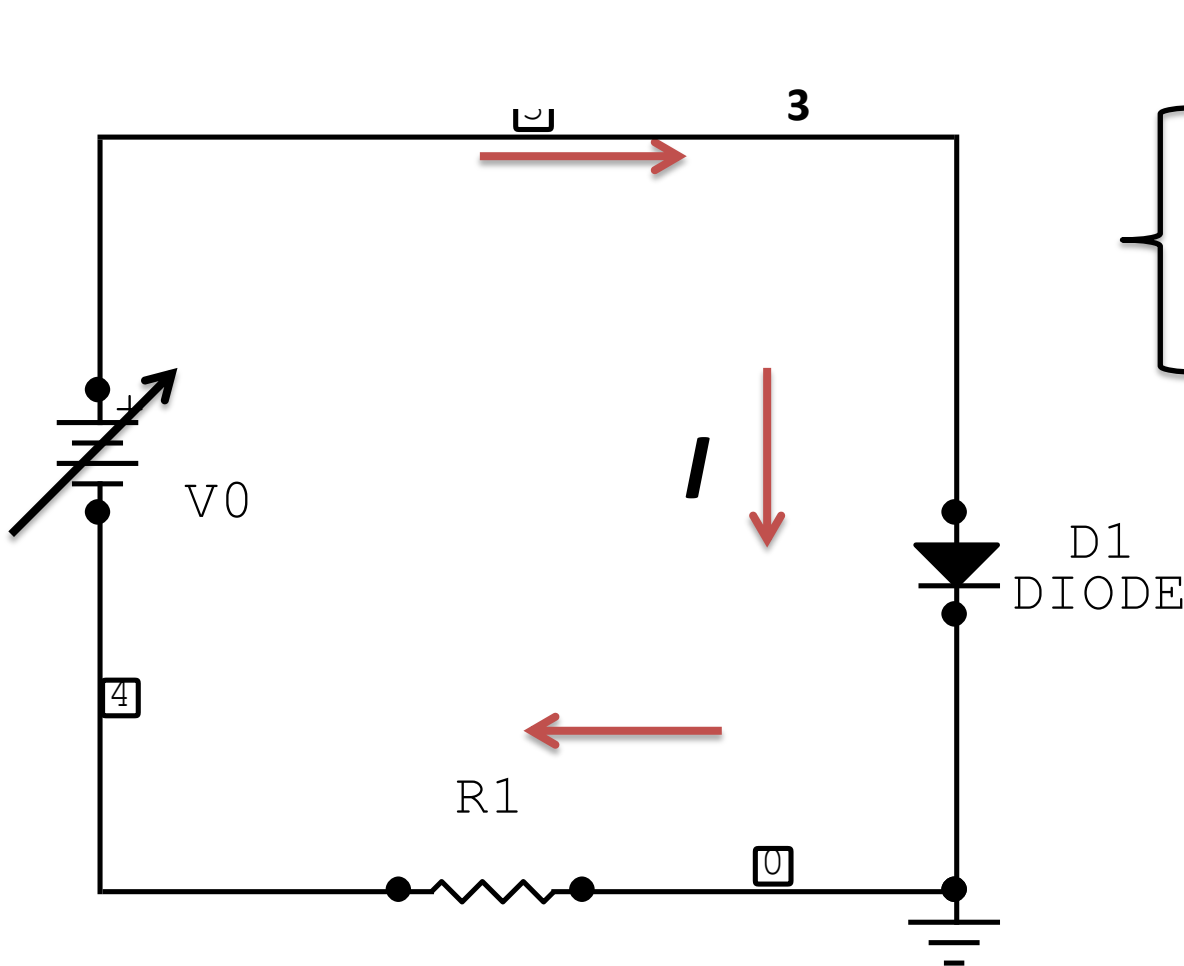


Reta de carga

F540

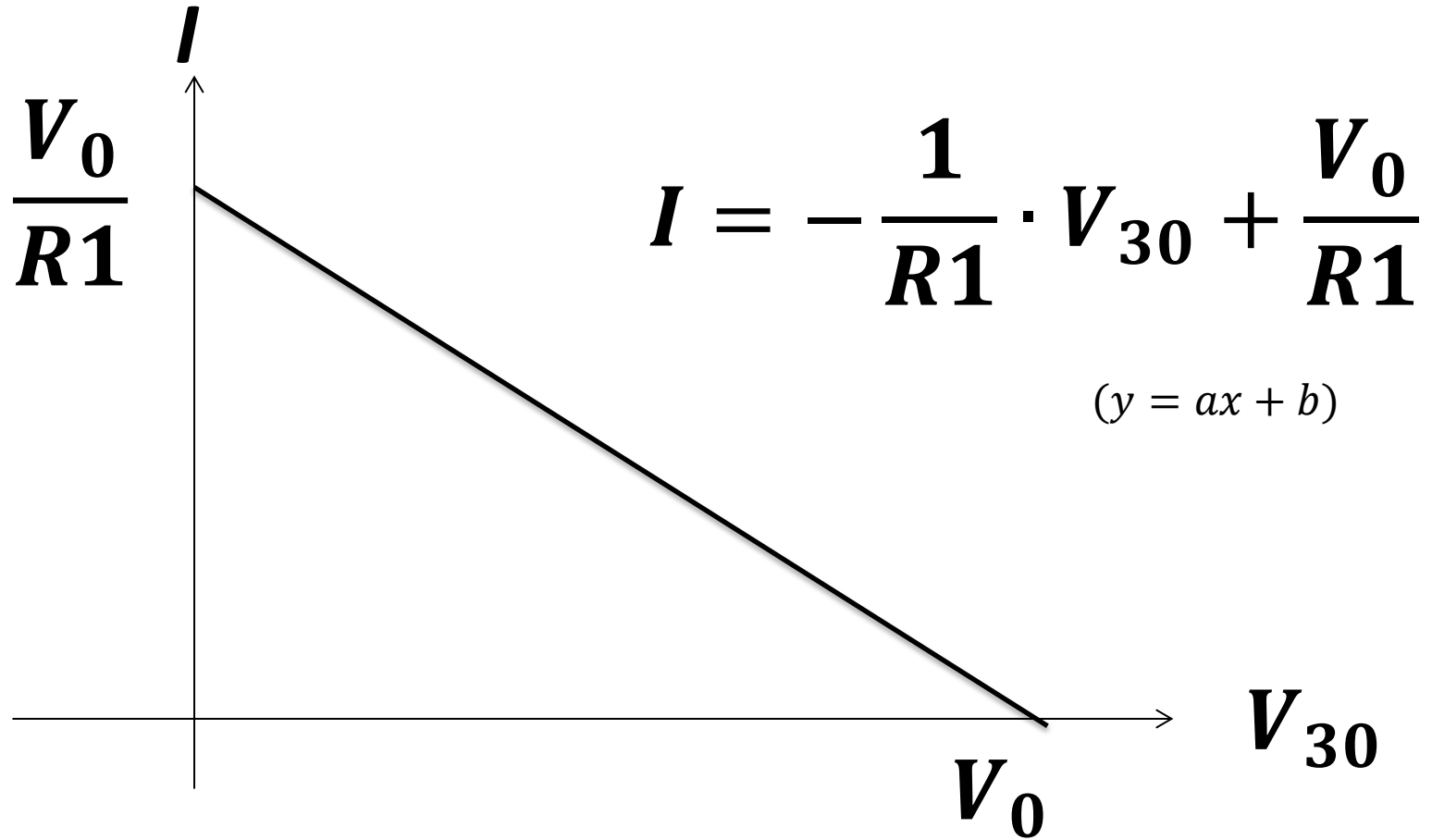
Reta de carga definida pela fonte e resistencia.



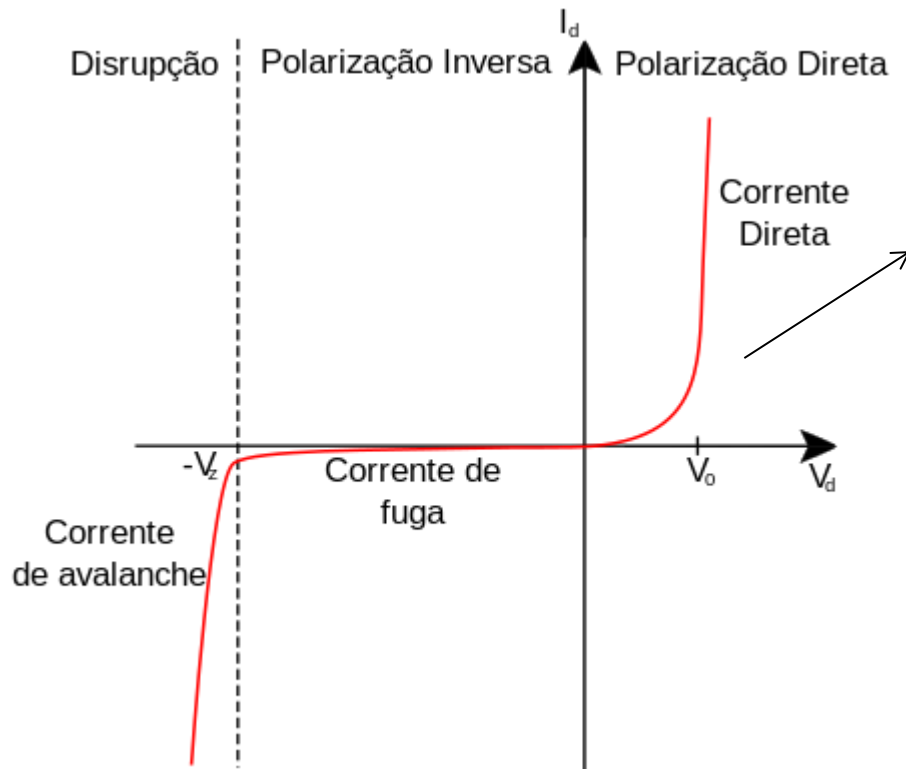
$$V_0 = V_{30} + R1 \times I$$

$$\left\{ \begin{array}{l} I = -\frac{1}{R1} \cdot V_{30} + \frac{V_0}{R1} \\ I = f(V_{30}) \end{array} \right.$$

Reta de carga

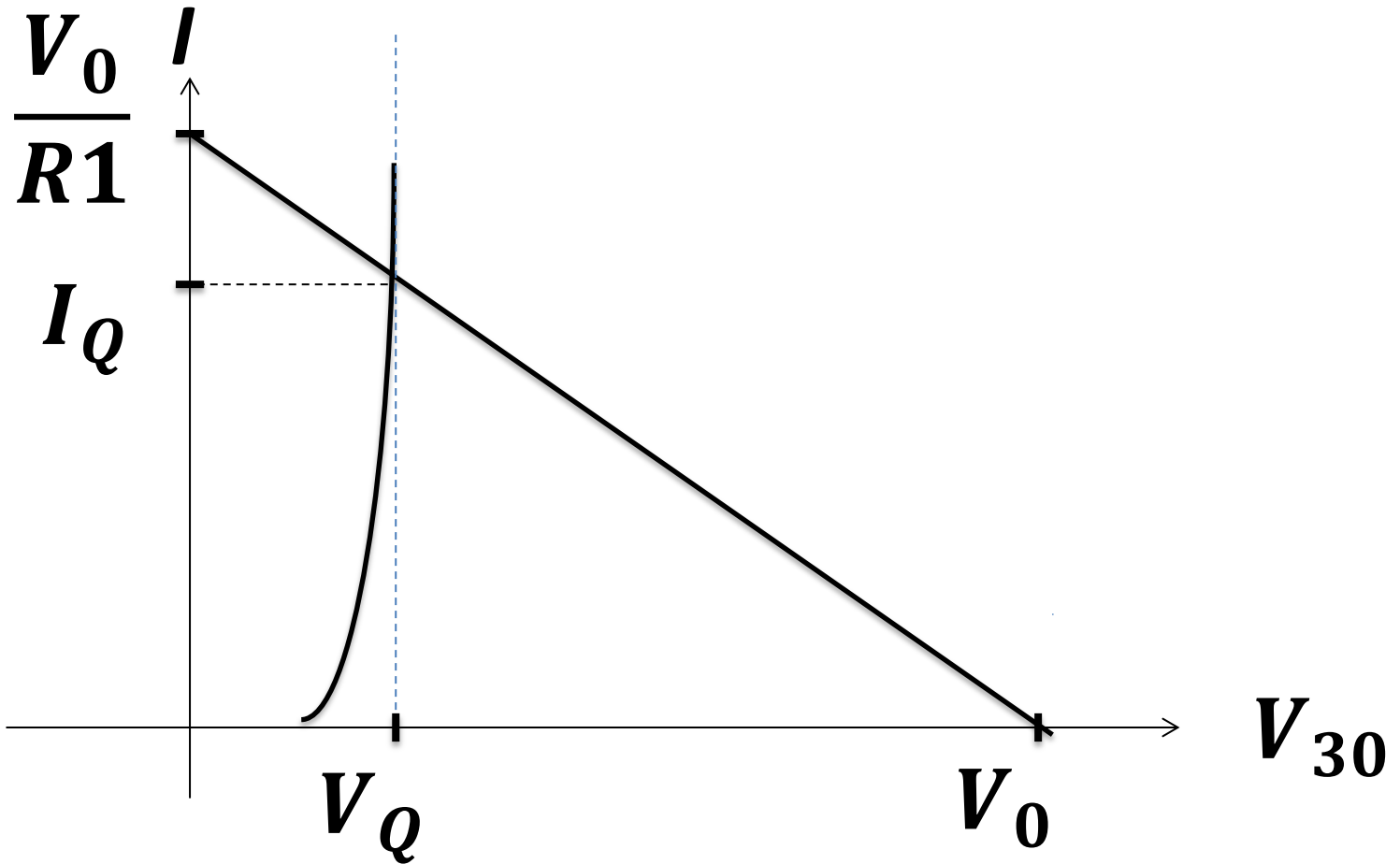


Curva do diodo:



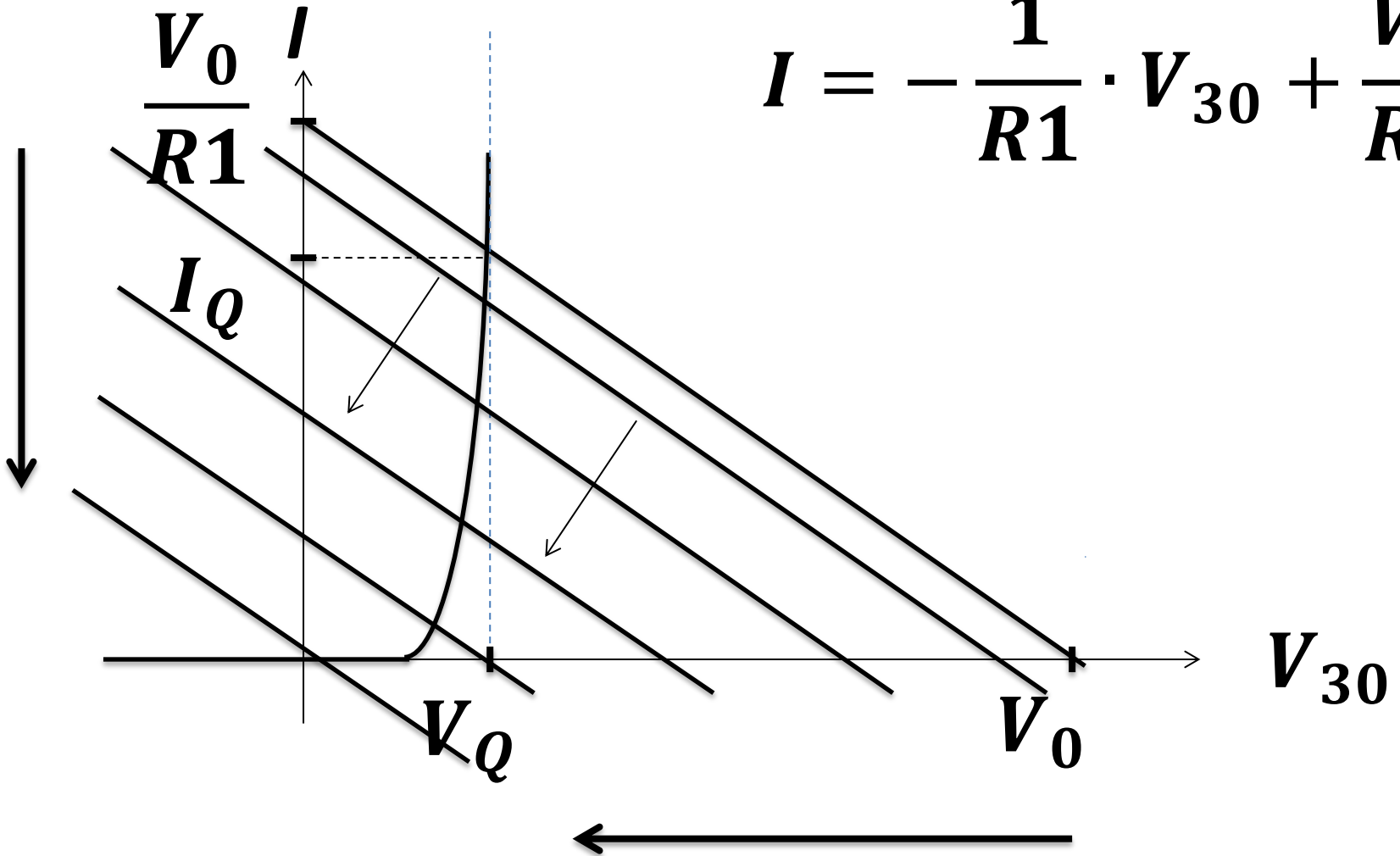
$$I = f(V_{30})$$

Ponto Quiescente, Q

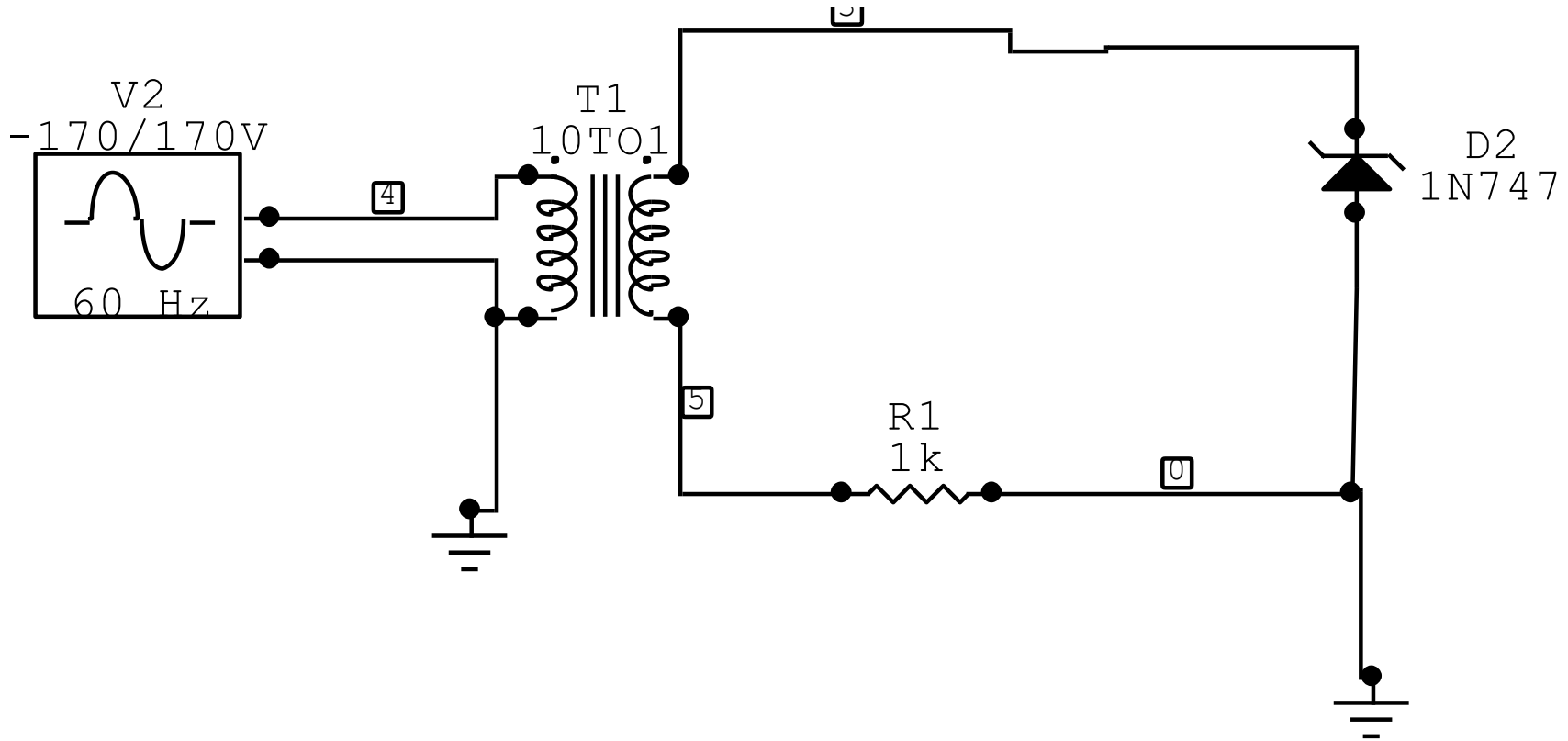


Ponto Quiescente, Q

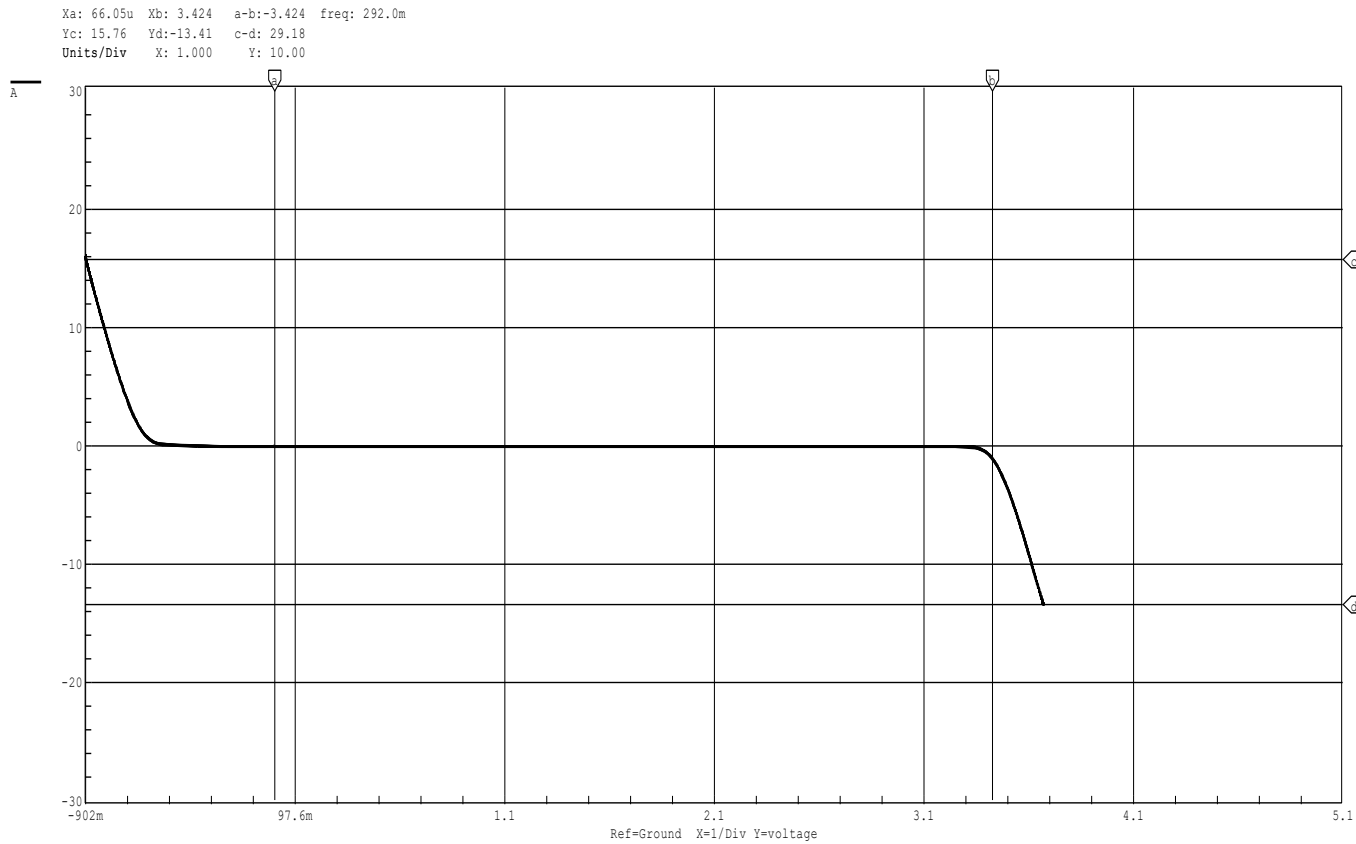
$$I = -\frac{1}{R1} \cdot V_{30} + \frac{V_0}{R1}$$



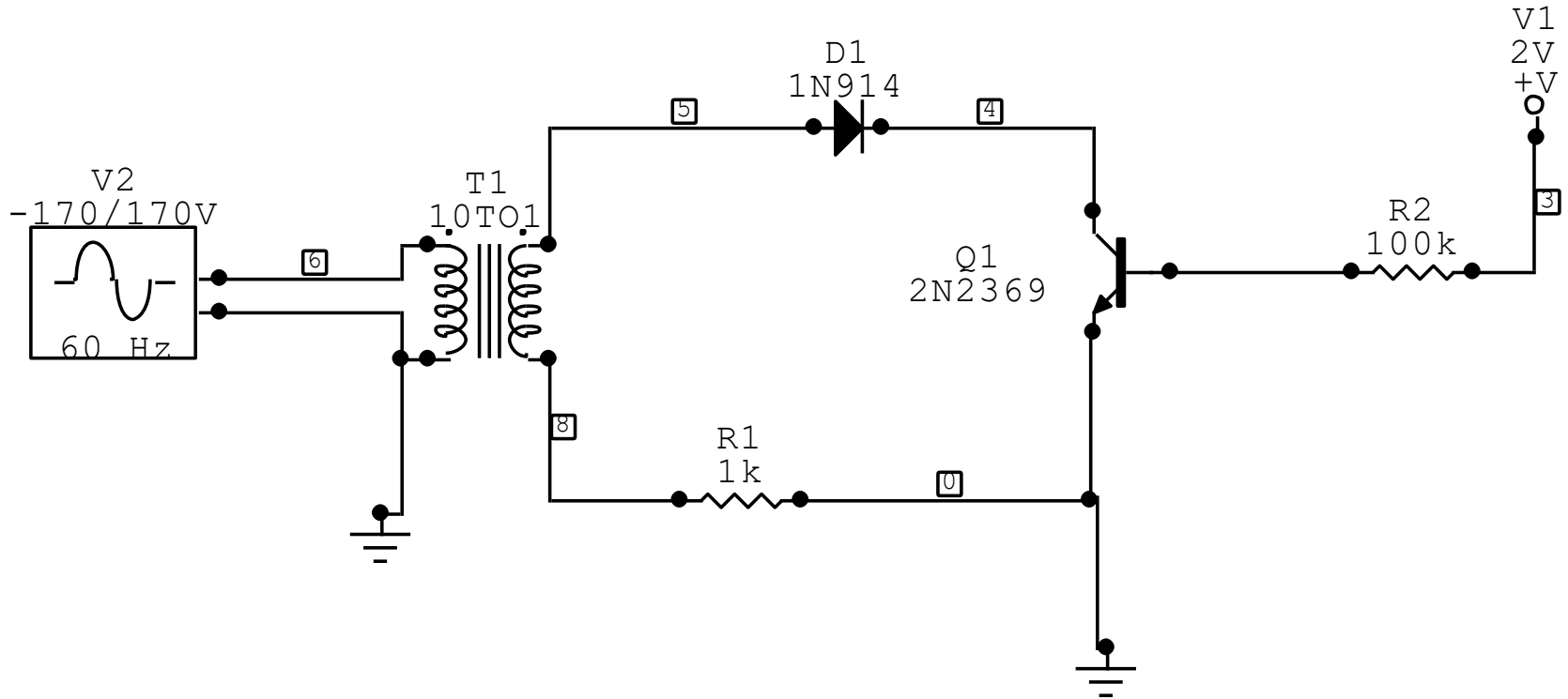
Caracterisador



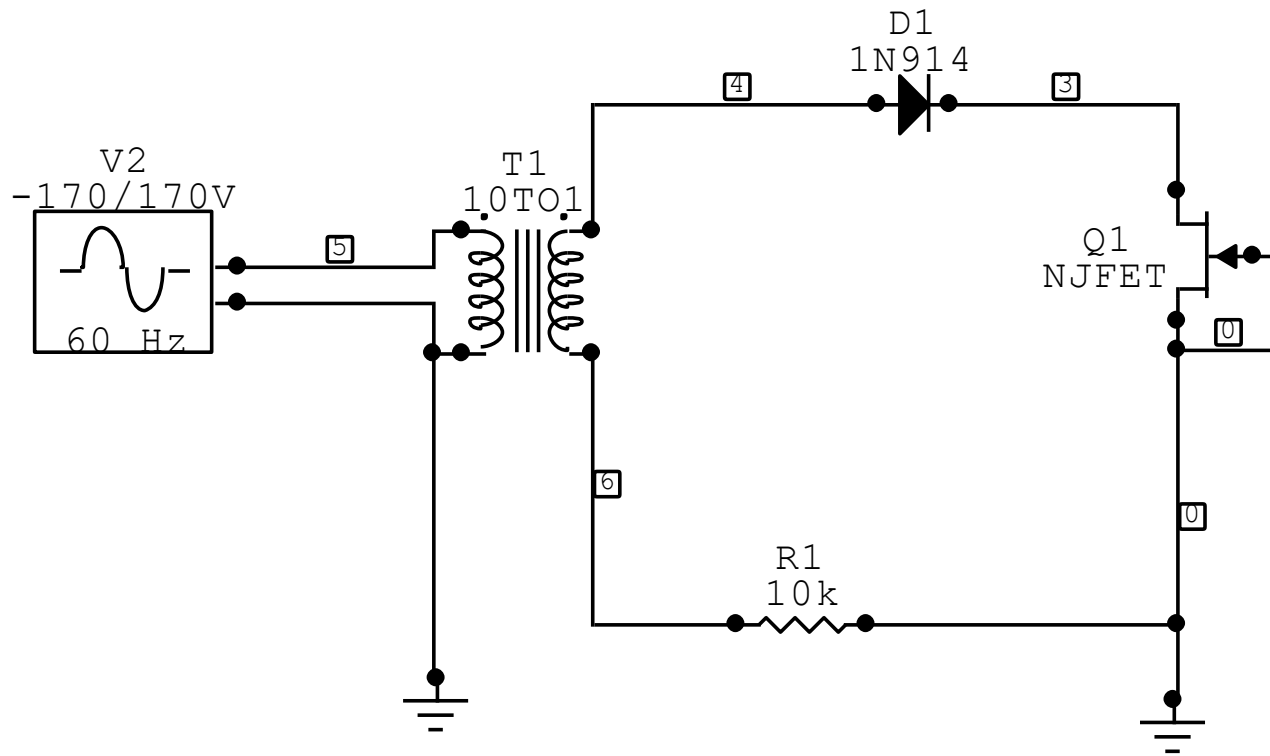
Curva do Zener



Caracterisando Transistor bipolar



FET



FIM